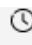
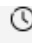


## Conference Agenda

### Day 1 - 5th June

 **08:00 - 08:50**  
Registration


 **08:50 - 09:00**  
MC OPENS

 **09:00 - 09:30**

#### Ministerial Address

The Hon. Danny Pearson, Minister for Transport Infrastructure, Minister for the Suburban Rail Loop, Assistant Treasurer



 **09:30 - 10:00**

#### Speed Networking

Introduce yourself, swap business cards, and form new and lasting business connections during a series of one-on-one exchanges with fellow conference delegates.

 **10:00 - 10:30**

#### Keynote Presentation by Rail Projects Victoria Metro Tunnel



- With five new underground stations and twin 9 km rail tunnels from Kensington in the west of the city to South Yarra in the southeast, the Metro Tunnel is the biggest upgrade of the Melbourne's train network and will provide turn up and go rail services that are the hallmark of the world's greatest cities.
- Latest project updates

Peter Wills, Senior Precinct Manager - Parkville, Metro Tunnel Project, Rail Projects Victoria

🕒 10:30 - 11:00

### Port of Melbourne Major Projects

- Port of Melbourne is Australia's largest capital city container and general cargo port, handling more than one third of the nation's container trade
- Overview of current projects



Sarah Browne, Executive General Manager - Corporate Relations, Port of Melbourne

---

🕒 11:00 - 11:30  
MORNING TEA BREAK

🕒 11:30 - 11:50

### Inland Rail

- Inland Rail is one of the most the significant rail infrastructure projects in the world. Construction has been underway in Victoria for just almost 18 months with the first two of 12 project sites between Beveridge and Albury completed.



Ed Walker, General Manager Victoria and South Australia Projects, Australian Rail Track Corporation

---

🕒 11:50 - 12:10

### Presentation by Conference Gold Sponsor Bentley Systems

---

🕒 12:10 - 12:40

### Update on the Suburban Rail Loop

- The Suburban Rail Loop (SRL) will deliver a new 90km rail line circling Melbourne, via Melbourne Airport, and up to 15 new stations in key employment, health, education and retail centres.
- Update on the significant SRL East progress – including construction, procurement and planning.



Lissa van Camp, Executive General Manager, Land, Planning, Environment and Sustainability, Suburban Rail Loop Authority

---

🕒 12:40 - 13:00

### Victoria's Big Build and the Future of Re-using, Repurposing and Recycling



- ecologiQ is a Victorian Government initiative integrating recycled and reused content into every corner of Victoria's \$100 billion Big Build
- This presentation will demonstrate the crucial connection between Victoria's transport projects, the reform of Victoria's recycling system and how innovation is helping to drive more sustainable outcomes.

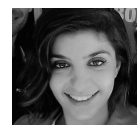
Alexis Davison, Executive Director, Engineering and Program Services, Major Road Projects Victoria

---

🕒 13:00 - 14:00  
LUNCH BREAK

🕒 14:00 - 14:20

### Building the Next Generation of Trains and Trams for Victoria



- This session will explore the challenges and opportunities associated with building the next generation of trains and trams for Victoria, including the use of new materials and technologies, the integration of smart systems, the need for flexibility and modularity, and the importance of stakeholder engagement.

Loulou Hammad, Customer Director, Alstom

---

🕒 14:20 - 14:40

### Presentation by Conference Gold Sponsor Autodesk

---

🕒 14:40 - 15:20

### Panel Discussion: Road Safety and Safer Road Infrastructure

- Embedding a strong culture of road safety within the community and supporting road users to make safe choices
  - Safer Local Roads and Streets Program
- 

🕒 15:20 - 15:50  
AFTERNOON TEA BREAK

🕒 15:50 - 15:55

### Prize Draw

---

🕒 15:55 - 16:25

### Human Factors Impacting Project Performance and How to Mitigate Them



- Research shows that major and mega projects frequently are delivered in a way that does not meet the stated objectives of the project. Often what is found is the tangible evidence of this under performance e.g. over time, over budget, poor quality and safety incidents (etc) and is only apparent well after the causes of this performance has taken root.
- Join James Kelly, Managing Director of Alchimie to explore how intentionally managing the human factors dimension of project delivery can set your projects up for success.

James Kelly, Managing Director, Alchimie

---

🕒 16:25 - 16:45

### The City of Melbourne's Transport Strategy 2030

- City of Melbourne's long-term vision that will deliver an enhanced experience for commuters, with more space for active transport and urban greening.
  - Transport Infrastructure for a safe and liveable city
- 

🕒 16:45 - 16:50  
MC CLOSES

🕒 16:50 - 17:50



NETWORKING & DRINKS

## Day 2 - 6th June

🕒 08:20 - 08:55  
REGISTRATION

🕒 08:55 - 09:00  
MC OPENS

🕒 09:00 - 09:30

### Speed Networking

Introduce yourself, swap business cards, and form new and lasting business connections during a series of one-on-one exchanges with fellow conference delegates.

---

🕒 09:30 - 09:50

### Getting better value from Melbourne's Bus Network

- How getting more people to use buses can ease congestion, reduce greenhouse gas emissions and improve access to transport.

Allison Stewart, Deputy Chief Executive Officer, Infrastructure Victoria



🕒 09:50 - 10:10

### Making the Right Moves Early: Designing Sustainable Corridors for Time and Cost Efficiency

Will Fooks, National Market Leader - Transport Planning and Advisory, Stantec



🕒 10:10 - 10:30

### Victoria's Transport Precincts

- The Department of Transport and Planning is leading the whole-of-government delivery and coordination of the designated transport precincts of Arden, Sunshine and Richmond to Flinders Street Corridor.
- Capitalising on major infrastructure investments to support thriving communities.

🕒 10:30 - 11:00

### North East Link

- Biggest ever investment in Melbourne's northeast
- The 6.5km North East Link tunnels from Watsonia to Bulleen will fix the missing link in our city's freeway network, take 15,000 trucks off local roads a day and reduce travel times by up to 35 minutes. Upgrades to the Eastern Freeway and M80 Ring Road will include new lanes, smart technology and a seamless connection to the North East Link tunnels.

🕒 11:00 - 11:30  
MORNING TEA BREAK

🕒 11:30 - 12:00

### Victoria's Freight Decarbonisation Strategy

- Working with the ports, freight, and logistics sectors to develop policies, regulations, infrastructure and technology so freight transport can reach zero emissions by 2045

Andrew Newman, Director - Ports, Freight and Intermodal, Freight Victoria - Department of Transport



🕒 12:00 - 12:20

### Driving Victoria's Future Transport – A Connected, Automated and Electrified Future

- Maximising opportunities created by new and emerging technologies: connected and automated vehicles
  - Smart Technology and Intelligent Management Systems to keep the network moving
- 

🕒 12:20 - 12:50

### The Use of EME2 to Increase Sustainability of Roads in Victoria

EME2 was first developed in France and is a high fatigue resistant asphalt with superior deformation resistance and a binder content of approximately 6%. The Western Roads Upgrade (WRU) project has some of the highest volume heavy vehicle roads in the state. While maintaining the strength and deformation resistance, the use of EME2 has reduced the thickness required by 25-40% compared to the conventional SI asphalt. It is also more workable and easier to compact, resulting in less construction time and the reduction of maintenance in the future causing less delays to transport. Due to EME2 being stronger than SI Asphalt, there is a reduction of the pavement thickness and of existing pavement material to landfill. Its increased lift thickness reduces the construction time and lowers the carbon footprint thus creating a more environmentally friendly solution for asphalt pavements. Ventia's Western Roads Upgrade (WRU) Project team was the first to commercially place EME2 asphalt in Victoria. The initiative by WRU saw the placement of EME2 in two sections of Doherty's Rd, Laverton North and Duncans Rd, Werribee. This use has continued in 2024 with nine additional roads paved with EME2 totalling 20,500 tonnes of asphalt (17 lane km's). This has reduced the CO2 emissions by an estimated 28,623 tonnes (47%), 11,000 tonnes (35%) of land fill reduction and the reduction of the use of non-renewable resources by 9,500 tonnes (30%). Throughout Victoria in all the major towns these pavement design and CO2 assessment have been repeated with similar results. EME2 is the sustainable option for our future.

Matt Noonan, Senior Pavement Engineer, Ventia  
Prasanth Padia, Pavements Site Engineer, Ventia

---

🕒 12:50 - 13:50  
LUNCH BREAK

🕒 13:50 - 14:30

### Panel Discussion

#### Sustainable Transport Infrastructure Planning for Victoria: Looking Towards the Future



- Taking a long term and sustainable approach to the state's infrastructure planning.
- Delivering infrastructure that is flexible, resilient and highly attuned to community needs.

Vani Naidoo, Executive Director, Infrastructure Advisory Group

---

🕒 14:30 - 14:50

### Exploring Movement and Place: Making Human-Centred Transport Planning a Reality

- How the concept of Movement and Place is gaining momentum cross Australian Cities
  - Recognising the dual function of streets as both through corridors and destinations in their own right
  - Case Studies
- 

🕒 14:50 - 15:10

### Path Towards Decarbonisation

- Victoria has set targets to decarbonise at the fastest rate in the country and has already cut its overall emissions by more than any other state since 2014.
  - Challenges and recognising the significant decarbonisation efforts to reach net zero by 2045
- 

🕒 15:10 - 15:15  
MC CLOSSES

Agenda is subject to change

\*Speakers to be confirmed

An Event by:



Contact:

**Expotrade Australia Pty Ltd**  
Suite 24, Building 4, 195 Wellington Road  
Clayton VIC 3168 Australia  
Tel: +613-95450360  
Email: [info@eteglobal.com](mailto:info@eteglobal.com)